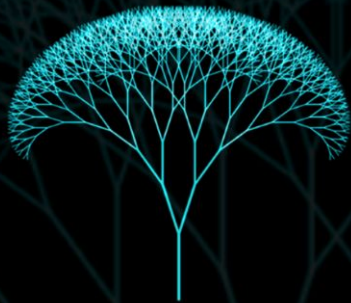




# Building a community of practice, with and beyond libraries

The AI4LAM Community



**AI4LAM**  
Artificial Intelligence for Libraries, Archives & Museums

# Who we are

Current AI4LAM Secretariat  
Co-chairs: Emmanuelle Bermès  
(BnF) and Neil Fitzgerald (British  
Library)

Jean-Philippe Moreux (BnF),  
member of AI4LAM Council

Céline Leclaire (BnF), member of (in  
development) French-Speaking  
AI4LAM Chapter



If you'd like to know more about AI4LAM, come and talk to us during the conference!



# How AI4LAM was born...



## 1st Fantastic Futures Conference in Oslo

Following MOU signed by the National Library of Norway and Stanford University Library, they jointly organised first major conference on AI/ML in the library sector, intended as a platform to develop a library community on AI.



## 2nd Fantastic Futures conference in Stanford

The 2nd conference also encompassed tutorials, workshops and an unconference. Several working groups were kicked off on this occasion.



## 3rd Fantastic Futures conference in Paris

The community was finally able to meet in person in Dec. 2021. About 60 people gathered in Paris (plus remotely) for 3 successful days. Most presentations are available online.



Dec. 2018

2019

Dec. 2019

2020

2021

### AI4LAM Secretariat Formed

NLN & Stanford reached out to the BnF, the British Library, and the Smithsonian Institution, and together these 5 institutions founded the AI4LAM Secretariat. AI4LAM has remained an informal community ever since.

### Launching [community calls](#)

Shortly after the world entered the Covid crisis and a general lockdown, decision was taken to postpone the next conference and a series of monthly open community calls was initiated. All the calls are recorded and available online.

### [Co-hosted AI4LAM - LIBER workshops](#)

A series of online workshops have been co-organised by the AI4LAM Teaching & Learning Group, LIBER and the BnF. Most of them have been recorded and are available online



# The AI4LAM governance at a glance

## AI4LAM Secretariat

- [National Library of Norway](#) : Svein Arne Brygfield
- [Stanford University Libraries](#) : Tom Cramer
- [Bibliothèque nationale de France](#) : Emmanuelle Bermès
- [Smithsonian Institution](#) : Mike Trizna, Rebecca Dikow, Beth Stern
- [British Library](#) : Neil Fitzgerald

## AI4LAM Council

Abbey Potter (Library of Congress); Amandine Saly-Giocanti (University Paris-Saclay); Claudia Engel (Stanford); Dan Pett (Cambridge University); Giles Bergel (Oxford University); Ingrid Mason (ANU); Javier de la Rosa (NL Norway); Jean-Philippe Moreux (BnF); John Sheridan (The National Archives UK); Maud Ehrmann (EPFL); Nicole Coleman (Stanford); Peter Leonard (Yale); Thomas Padilla (CRL).

[Google Group Mailing List](#) - [Google Drive](#) - Slack (Chat): [View](#) | [Join](#)



# Working Groups and Chapters activity



## Active WGs

### Metadata Working Group

Co-chairs: Jeremy Nelson (Stanford University) and Tim Thompson (Yale University)

### Registry Working Group

Co-chairs: Tom Cramer (Stanford University) and Svein Arne Brygfeld (National Library of Norway)

### Teaching & Learning Working Group

Co-chairs: Claudia Engel (Stanford University) and Mike Trizna (Smithsonian)

### Australia & New Zealand Chapter

Coordinators: Ingrid Mason, (The Australian National University), Alexis Tindall, (University of Adelaide Library), Katherine Jarvie, (RMIT University Library) and many others!

See [YouTube Playlist](#)

### French-Speaking Chapter (in development)

Co-chairs: Antoine Courtin (Musée d'Orsay), Florence Clavaud (Archives nationales de France), Luc Bellier (University Paris Saclay)



## Chapters



## Others

### Community Reading Group

Lead: Mary-Ellen Petrich (Stanford University)

### Retired: Challenge Working Group

Co-chairs: Nicole Coleman (Stanford University), Eileen Jakeway (Library of Congress), David Lowe (Texas A&M University)

[Read more >>](#)





# What have we learned?

# The road towards Fantastic Futures? Conference takeaways

## 2018: the enlightenment

High interest across GLAM sector

Interest vs practical hands-on-experience gap

Proof of concepts in small number of organisations to inform next steps

## 2019: reaching maturity

Inspiration from the private sector

Artists, professionals, and researchers, questioning ethics and approach - role for LIS and Archival Practice

Increasing uptake and experimentation across sector

## 2021: bigger, broader, stronger

A smaller conference due to Covid situation

Massive projects aiming industrialisation

Articulated institutional strategies



# Community Channels 2021

---

Google Group - 326 members

Slack - 443 members

Twitter - 328 members

Monthly Community Calls - 40 to 80 participants (plus recordings)

Reading Group - 16 texts discussed

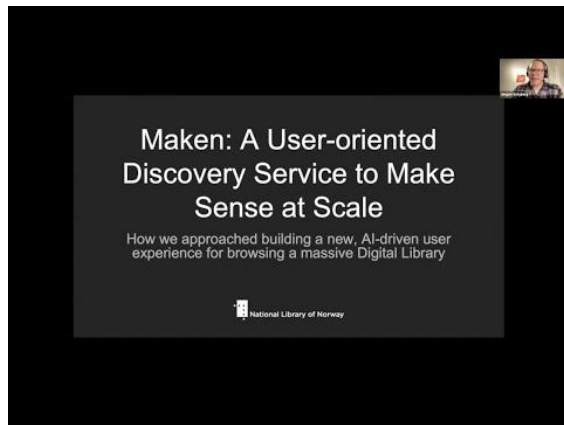




# When lightning strikes

Focus on lightning talks and other resources of interest to the Library community

FF21 Replay:  
Maken, a  
user-oriented  
service at scale  
by NLN



Visit our brand new [YouTube channel!](#)

Text, OCR, Newspapers, named entities... : [May 2020](#) - [November 2020](#) - [December 2020](#) - [February 2021](#)

Images, audiovisual, content discovery : [June 2020](#) - [October 2020](#) - [March 2021](#) - [April 2021](#) - [February 2022](#)

Organization, ethics, trust, quality : [November 2021](#) - [March 2022](#) - [May 2022](#)

Beta Test of Library Carpentry Introduction to AI and Machine Learning:

- Youtube link to the record : <https://youtu.be/oM6pz7iqses>
- Zenodo link to the powerpoint : <https://zenodo.org/record/4700664#YMckpW0zaUk>

Teaching and Learning WG review on AI teaching resources on arxiv: <https://arxiv.org/abs/2205.04738>



# Cross-fertilization

When we say “LAM”, what's in it for you ?

A museum's view  
on restoring  
physical items  
with AI  
(community call,  
April 2022)



An artist's view  
on life-changing  
perspectives of  
AI (FF19,  
Stanford)

AI plays the piano for you (FF21, Paris)



The background of the slide is a high-resolution aerial photograph of a city or natural landscape. It features a dense, intricate network of roads or paths that branch out like veins across a terrain with various shades of purple, blue, and green. The overall appearance is that of a complex, interconnected system, possibly representing a data network or a geographical map.

**Where do we go  
from here?**



# Hopes and expectations

AI4LAM will be an important learning & development player for LAMs  
Best practice hub for FAIR datasets & models - hosting challenges/calls  
Showcase tools & methods for AI in LAMs and disseminate approaches

Global AI Network

## Forward thinking

'FAIR/CARE principles' for AI  
Environmental considerations  
BAU in GLAMs

Advocacy & Outreach

## Community nurturing

Continue to grow community  
Balance technical & advocacy  
AI4LAM formalised

Transition to BAU

## Worldwide outreach

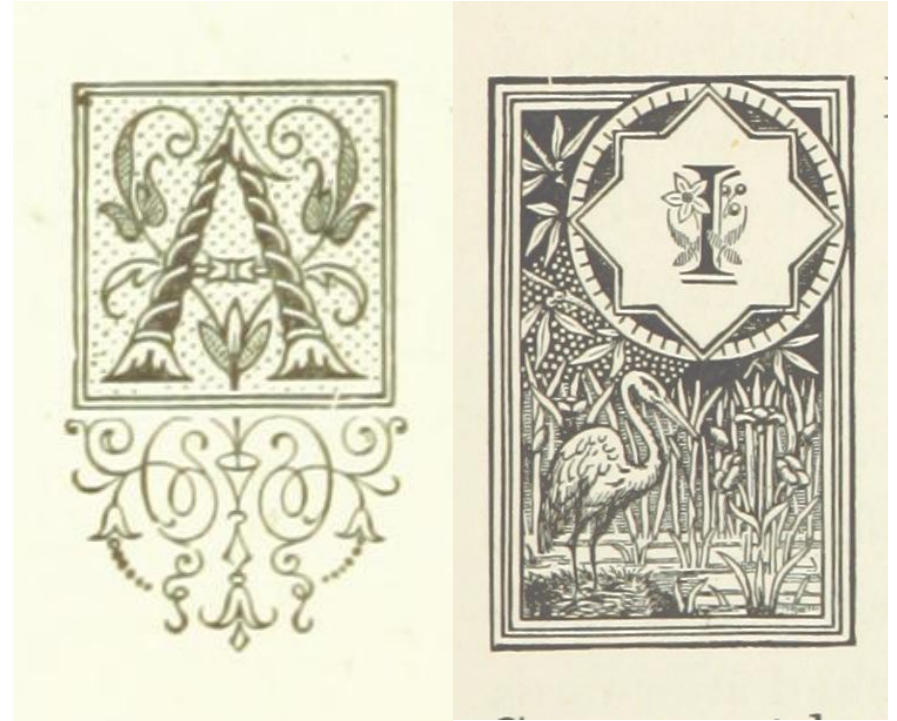
Build on success of Chapters  
Internationalise AI/ML  
Fantastic Futures rotation




# Collaborations & Partnerships

Building on our solid foundation, we are looking to collaborate and partner with others to advance AI practice in the GLAM sector

- 01 | AI4LAM Registry - [contributions welcome](#)
- 02 | Virtual [event](#) 2022 - CfP in Autumn, delivery by Dec
- 03 | [Community Calls](#) - lightning talks/demos welcome
- 04 | [Review](#) of GLAM Training Resources - feedback
- 05 | Join or propose a [Working Group/Chapter](#)





AI4LAM is a collaborative framework for libraries, archives and museums, to organise, share, and elevate, their knowledge about and use of artificial intelligence. Individually we are slow and isolated; collectively we can go faster and farther.

Join us...





# Merci !

Twitter @ai4lam

Email: [contact@ai4lam.org](mailto:contact@ai4lam.org)

# Thank you !

Slack: <https://ai4lam.slack.com>

Google Group: <https://groups.google.com/g/ai4lam>



## AI4LAM

Artificial Intelligence for Libraries, Archives & Museums