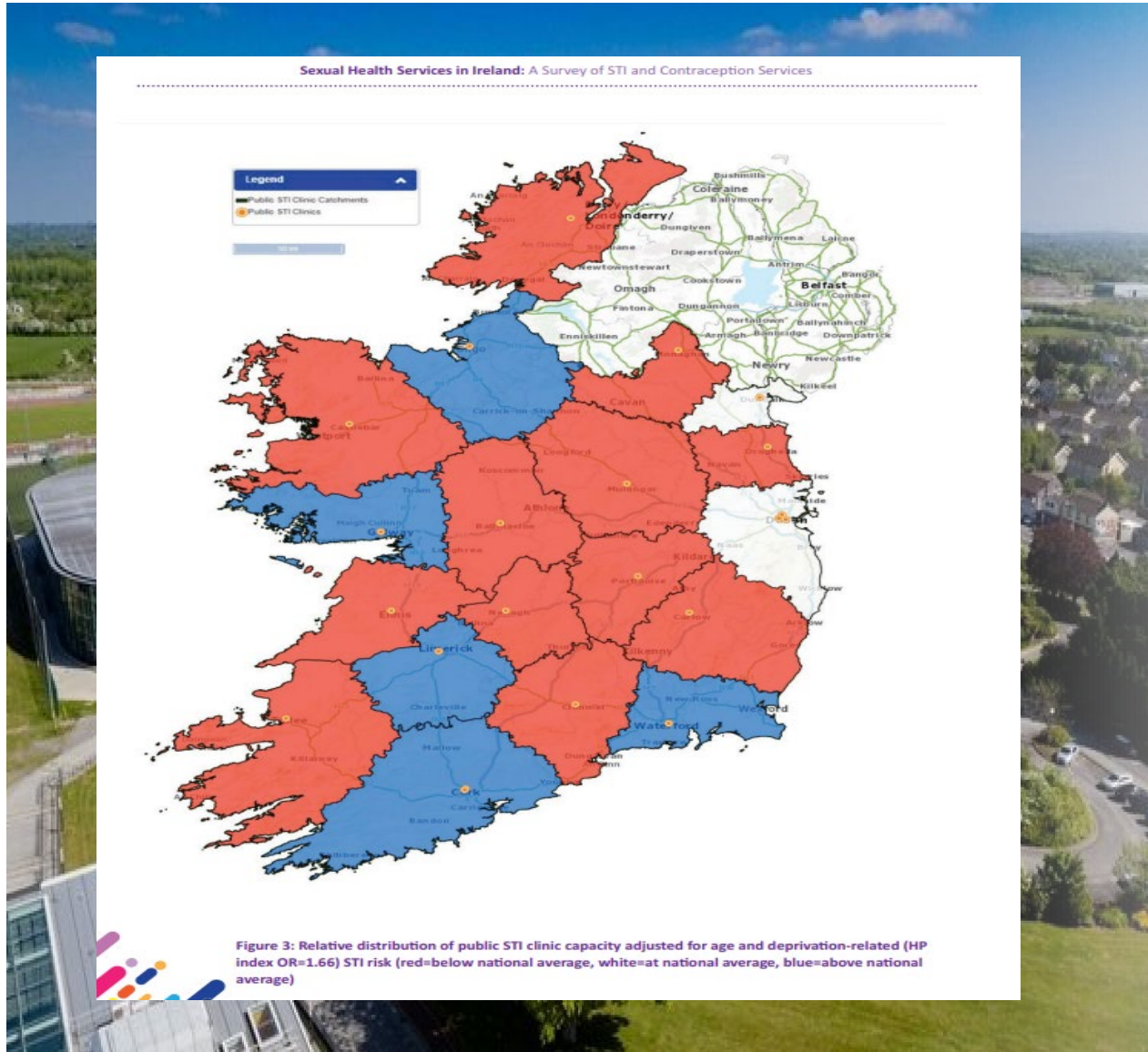


# Bridging the Gap: A Campus-Based Sexual Health Model at TUS

*Laura Tully*  
*Sexual Health Service Nurse Manager*  
*Technological University of the Shannon*  
29th Annual Health Promotion Conference 26.06.25



# TUS Technological University of the Shannon



- TUS is a multi-campus university spread across seven campuses throughout Ireland's Midwest and Midlands region. Athlone is the principal campus for **7,000** students of which **10%** are international students.
- 63% of students at Athlone are aged 18-24, classified as 'high-risk' for sexually transmitted infections.
- Midlands region is geographically underserved for STI and contraception services.
- 90% of those referred to a specialist service did not attend.
- National Sexual Health Strategy: *'that equitable, accessible and high quality sexual health services, which are targeted and tailored to need, will be available to everyone'*.<sup>2</sup>

# What Makes It Work?

- Hub-and-Spoke Model
- Nurse-led – trust & consistency
- Accessibility – on-campus, cost-free
- Confidentiality – peer-sensitive, inclusive care
- Health Education & Promotion – workshops, campaigns, peer outreach

*Right care, right place, right time, right team*

[Link to Sláintecare Article 25.02.21](#)

# Outcomes

- Provision of an integrated sexual health, contraception and health promotion service **on campus**
- **Seamless integration** to existing student health service
- **Clinic hours, facilities & approaches to care tailored to meet student's needs**
- Enhanced knowledge & awareness, early diagnosis, treatment and follow up
- Reduction in transmission and prevalence of HIV/STI's, lower unintended pregnancy rates
- Decreased stigma – normalising sexual health care
- Effective health promotion campaigns supporting positive relationships, consent and sexual health





# Impact and Engagement 2024

- 1,066 consultations 2024 (exceeded target by 25%)
- 2 complex case external referrals to GUM
- 100% increase in number of students supported with partner notification
- 11% contraception uptake (14% LARC)
- Campaigns supporting positive sexual health delivered to campus community
- 14,250 condoms and 8250 lubricant distributed
- 100% of patients would recommend to others – increased comfort, reduced stigma, improved help-seeking behaviour







# Sexual Health Awareness & Guidance Week



**TUS Student Sexual Health, Contraception & Health Promotion Service**

- Sexual Health Advice
- Sexually Transmitted Infections (STIs) Testing & Management
- Pregnancy Testing & Support
- Contraception Care
- Condoms & Lubricant
- Emergency STI care - Same Day 'Symptoms' Service
- Vaccinations
- PEPSE/PrEP Access
- Partner Notification Support
- Risk Reduction Advice & Guidance

We are here to listen, not to judge. We don't judge, our service is confidential for registered students of all ages, gender and sexual preference.

Scan here to book an appointment

096 646 8000

PIC COLLAGE

**REDUCE YOUR RISK OF CHEMSEX**

**SUBSTANCE USE & SEXUAL RISK**

**HOW DOES ALCOHOL AFFECT YOUR SEX LIFE**

**HOW DO DRUGS AFFECT YOUR SEX LIFE**

**TUS STUDENT SEXUAL HEALTH SERVICE**

**THE RISK IS NOT KNOWING**

**HIV LASTS A LIFETIME**

**PEPSE/PrEP Access**

**Follow Us to win a Healthy Hamper**

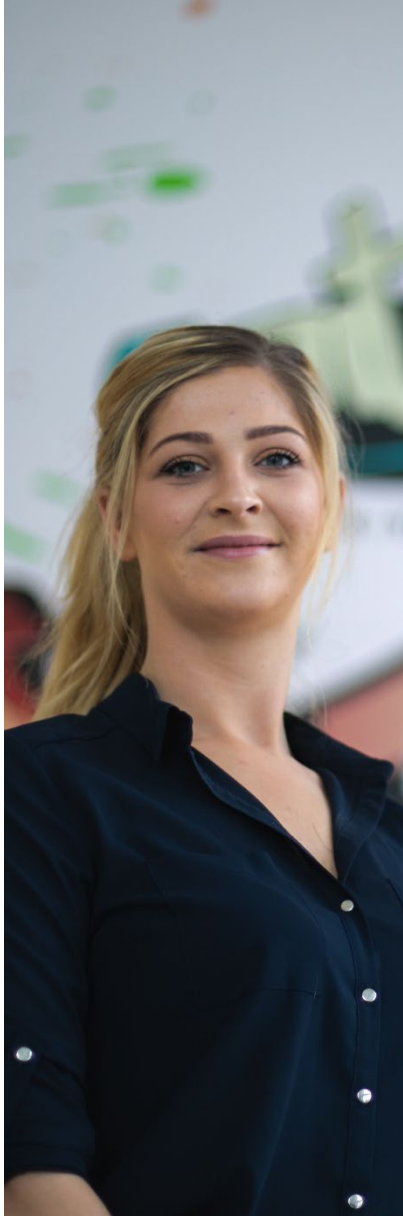
We are here to listen, not to judge. We don't judge, our service is confidential for registered students of all ages, gender and sexual preference.

Where to book an appointment: 096 646 8000, 11am for same day service

Stáintecare. Right Care. Right Place. Right Time.



# Patient Feedback



*"I feel like the college has needed something like this for a long time!  
The new building is great, modern and very clean."*

*"I always put things that involved sexual health off because I feel  
embarrassed. The nurse was lovely and made me feel so comfortable.  
She is clearly fantastic at her job. I would highly recommend to my  
friends."*

*"usually get a same day appointment"*

*"I was seen during my lunch break which meant I didn't have to miss  
classes"*

*"very confidential"*

*"would not have gone elsewhere with this problem, glad it is here on  
campus"*

# The Future

***Potential to be implemented as model of best practice  
for community-based healthcare across the  
technological higher education and primary care sector  
in the future***

## **Our Next Steps:**

- Expand model across all of TUS
- Link with [www.sh24.ie](http://www.sh24.ie)
- Expansion of free contraception scheme
- Explore provision of community-based PrEP
- Explore expansion of nurse-led service to include N.P. ANP



**Thank you for listening**

**Questions welcome!**

*Laura Tully*  
*Sexual Health Service Nurse Manager*  
*Technological University of the Shannon*  
29th Annual Health Promotion Conference 26.06.25