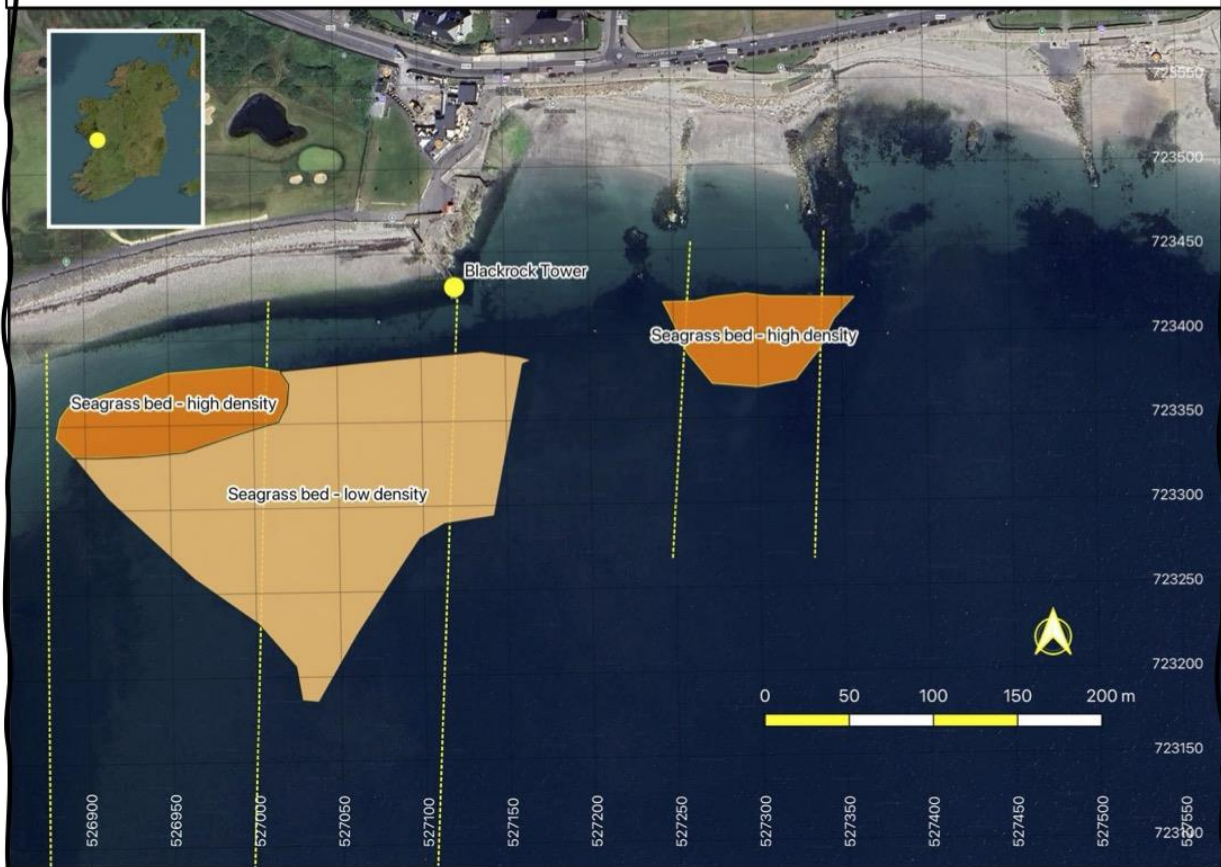


## Seagrass Swimmer Survey



### Blackrock, Salthill, Galway City, 19 Sept 2024

After a briefing by Kevin ([kevin.lynch@universityofgalway.ie](mailto:kevin.lynch@universityofgalway.ie)), 7 citizen science volunteers undertook the survey of the seabed.

#### Method:

- 1) Surveyors lined up ~5m apart on shoreline
- 2) They swam in a line directly out, noting presence of seagrass, and conferring as they went
- 3) When water depth was too deep (~3m to 4 m), and there was no evidence of seagrass, the survey line was finished
- 4) On return, observations were recorded by a person with a notebook
- 5) This was repeated moving from east to west
- 6) Observations were mapped with QGIS, see map above.

